



LIUGONG

Engine	Perkins 403D-15T
Rated Power	27.3 kW (36 hp / 37 ps) @ 2,600 rpm
Nominal Amplitude Range	0.45 mm
Vibration Frequency Range	60 Hz
Centrifugal Force Range	33.5 kN
Working Width	1,200 mm
Operating Weight	3,360 kg

6032E ROLLER

TOUGH WORLD. TOUGH EQUIPMENT.

6032E SPECIFICATIONS >>>

ENGINE	
Emission Regulation	Tier 3/ Stage III
Manufacturer	Perkins
Model	403D-15T
Rated Power	27.3 kW (36 hp / 37 ps) @ 2,600 rpm
Peak Torque	115 N · m
Number of Cylinders	3
Aspiration	Turbo
Cooling Type	Water

ELECTRICAL SYSTEM	
System Voltage	12 V

DRIVE TRAIN	
Theoretical Gradeability	30 %
Transmission Type	Hydraulic
Maximum Speed, fwd	9.5 km/h
Min. Outside Turning Radius	4,100 mm

AXLES	
Steering System	Hydraulic
Steering Method	Articulation
Steering Angle	±30°
Steering Relief Pressure	16 MPa

BRAKES	
Service Brake Type	Hydraulic

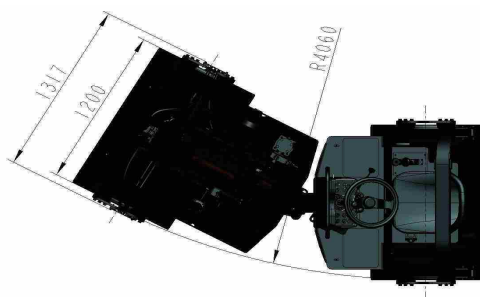
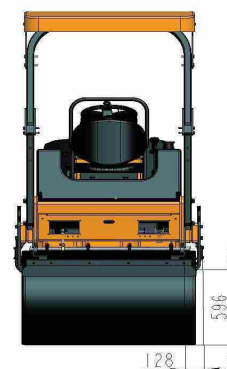
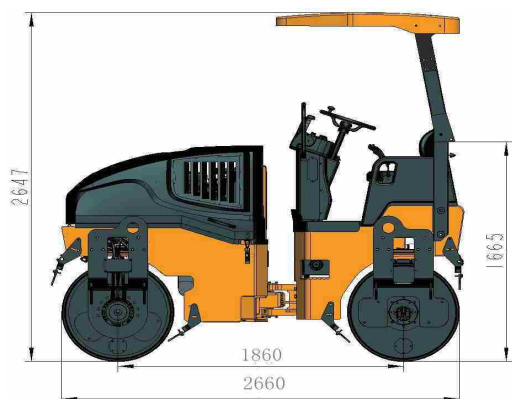
HYDRAULIC SYSTEM	
Main Pump Type	Piston Pump
Main Relief Pressure	18 MPa

PERFORMANCE (DOUBLE DRIVE, DOUBLE VIBRATION)	
Front Drum Static Linear Load	135 N/cm
Rear Drum Static Linear Load	145 N/cm
Number of Vibrating Drums	2
Nominal Amplitude	0.45 mm
Vibration Frequency	60 Hz
Centrifugal Force	33.5 kN
Number of Amplitude Settings	1

OPERATING WEIGHTS	
Operating Weight	3,360 kg
Weight on Front Drum	1,620 kg
Weight on Rear Drum	1,740 kg

SERVICE CAPACITIES	
Fuel Tank	60 L
Engine Oil	7 L
Hydraulic Oil Tank	54 L
Cooling System	12 L

OPTIONAL EQUIPMENT	
Rotary Beacon	



Guangxi Liugong Machinery Co., Ltd.

No. 1 Liutai Road, Liuzhou, Guangxi 545007, PR China
 T: +86 772 3886124 E: overseas@liugong.com
 www.liugong.com

03/2021 Designed by LiuGong

Specifications and designs are subject to change without notice. Machines shown may include optional equipment. LiuGong standard and optional equipment may vary from region to region. Please consult your LiuGong dealer for information specific to your area. Engine power kW is converted to horsepower (1 kW=1.3596 ps and 1 kW=1.3410 hp) in this file.