



<b>Engine</b>	Cummins 6BTA5.9-C
<b>Gross Power</b>	112 kW (150 hp / 152 ps) @ 1,950 rpm
<b>Net Power</b>	102 kW (137 hp / 139 ps) @ 1,950 rpm
<b>Maximum Dig Depth</b>	6,562 mm
<b>Standard Bucket Capacity</b>	1.0 m <sup>3</sup>
<b>Operating Weight</b>	22,000 kg

# 922E EXCAVATOR

# 922E SPECIFICATIONS >>>

ENGINE	
Emission Regulation	Tier 2 / Stage II
Make	Cummins
Model	6BTA5.9-C
Gross Power	112 kW (150 hp /152 ps) @1,950 rpm
Net Power	102 kW (137 hp /139 ps) @1,950 rpm
Peak Torque	614 N·m @ 1,500 rpm
Number of Cylinders	6
Displacement	5.9 L

UNDERCARRIAGE	
Shoe Width	600 mm
Number of Shoes per Side	49
Number of Upper Rollers per Side	2
Number of Bottom Rollers per Side	8

BOOM & ARM	
Boom Length	5,710 mm
Arm Length	2,915 mm

BUCKET PERFORMANCE	
Std. Bucket Heaped Capacity (Referenced)	1.0 m <sup>3</sup>
Min. Heaped Capacity of Bucket Options	0.9 m <sup>3</sup>
Max. Heaped Capacity of Bucket Options	1.2 m <sup>3</sup>

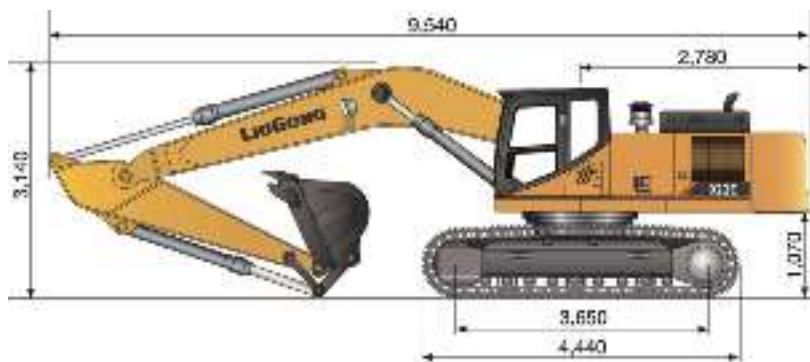
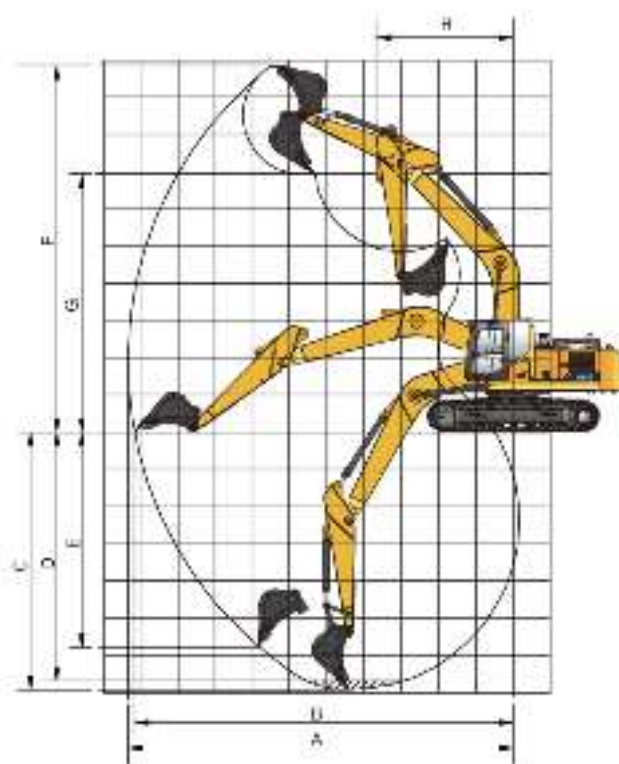
TRACK DRIVE	
Maximum Travel Speed	5.7 km/h
Drawbar Pull	220 kN

SERVICE CAPACITIES	
Fuel Tank	420 L
Engine Oil	25 L
Cooling System	25 L
Hydraulic Reservoir	210 L
Hydraulic System Total	330 L

HYDRAULIC SYSTEM	
Main Pumps Total Flow	448 L/min
Relief Pressure, main	34.3 MPa
Relief Pressure, boost	37.3 MPa

SWING SYSTEM	
Swing Speed	12.5 rpm

WORKING RANGE	
A. Max. Digging Reach	9,870 mm
B. Max. Digging Reach on Ground	9,685 mm
C. Max. Digging Depth	6,562 mm
D. Max. Digging Depth, 2.44 m (8') level	6,390 mm
E. Max. Vertical Wall Digging Depth	5,080 mm
F. Max. Cutting Height	9,945 mm
G. Max. Dumping Height	7,170 mm
H. Min. Front Swing Radius	3,090 mm
Bucket Digging Force (ISO)	152.5 kN
Arm Digging Force (ISO)	105 kN
Bucket Capacity	1.0 m <sup>3</sup>



## Guangxi Liugong Machinery Co., Ltd.

No. 1 Liutai Road, Liuzhou, Guangxi 545007, PR China  
 T: +86 772 3886124 E: overseas@liugong.com  
 www.liugong.com

Specifications and designs are subject to change without notice. Machines shown may include optional equipment. Liugong standard and optional equipment may vary from region to region. Please consult your Liugong dealer for information specific to your area. Engine power kW is converted to horsepower (1 kW=1.3596 ps and 1 kW=1.3410 hp) in this file.

05/2020 Designed by LiuGong  
 Replace the previous versions of 01/2019