



<b>Engine</b>	Cummins 6BTAA5.9-C178-II
<b>Gross Power</b>	133 kW (178 hp / 181 ps) @ 2,000 rpm
<b>Net Power</b>	125 kW (168 hp / 170 ps) @ 2,000 rpm
<b>Maximum Digging Depth</b>	6,925 mm
<b>Standard Bucket Capacity</b>	1.2 m <sup>3</sup>
<b>Operating Weight</b>	25,500 kg

# 925E EXCAVATOR

# 925E SPECIFICATIONS >>>

## ENGINE

Emission Regulation	Tier 2 / Stage II
Manufacturer	Cummins
Model	6BTAA5.9-C178-II
Gross Power	133 kW (178 hp / 181 ps) @ 2,000 rpm
Net Power	125 kW (168 hp / 170 ps) @ 2,000 rpm
Peak Torque	708 N·m @ 1,500 rpm
Number of Cylinders	6
Displacement	5.9 L

## UNDERCARRIAGE

Shoe Width	600 mm
Number of Shoes per Side	51
Number of Bottom Rollers per Side	9
Number of Upper Rollers per Side	2

## BOOM & ARM

Boom Length	6,000 mm
Arm Length	2,980 mm

## BUCKET PERFORMANCE

Std. Bucket Heaped Capacity (Referenced)	1.2 m <sup>3</sup>
Min. Heaped Capacity of Bucket Options	1.0 m <sup>3</sup>
Max. Heaped Capacity of Bucket Options	1.3 m <sup>3</sup>

## TRACK DRIVE

Maximum Travel Speed	5.8 km/h
Drawbar Pull	229 kN

## SERVICE CAPACITIES

Fuel Tank	470 L
Engine Oil	25 L
Cooling System	25 L
Hydraulic Reservoir	210 L
Hydraulic System Total	330 L

## HYDRAULIC SYSTEM

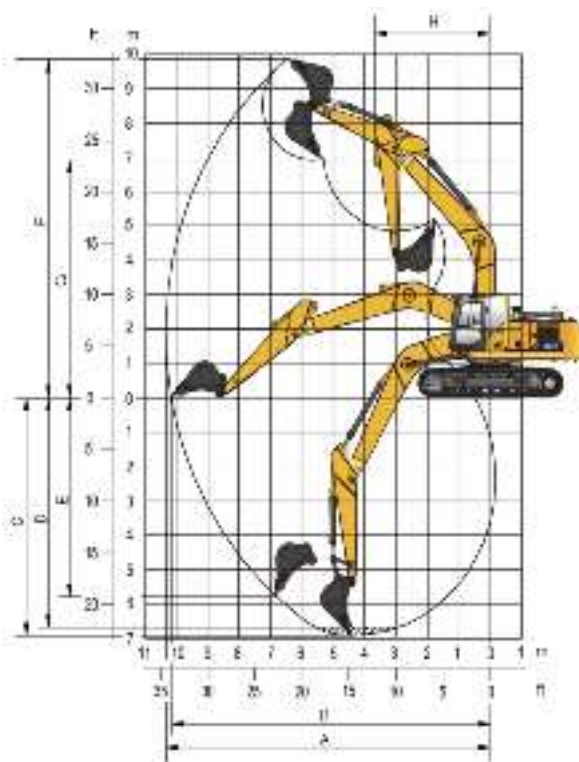
Main Pumps Total Flow	480 L/min
Relief Pressure, main	34.3 MPa
Relief Pressure, boost	37.3 MPa

## SWING SYSTEM

Swing Speed	12 rpm
-------------	--------

## WORKING RANGE

A. Max. Digging Reach	10,340 mm
B. Max. Digging Reach on Ground	10,150 mm
C. Max. Digging Depth	6,925 mm
D. Max. Digging Depth, 2.44 m (8') level	6,675 mm
E. Max. Vertical Wall Digging Depth	5,795 mm
F. Max. Cutting Height	9,865 mm
G. Max. Dumping Height	6,920 mm
H. Min. Front Swing Radius	3,695 mm
Bucket Digging Force (ISO)	179 kN
Arm Digging Force (ISO)	134 kN
Bucket Capacity	1.2 m <sup>3</sup>



Guangxi Liugong Machinery Co., Ltd.

No. 1 Liutai Road, Liuzhou, Guangxi 545007, PR China  
T: +86 772 3886124 E: overseas@liugong.com  
www.liugong.com

12/2020 Designed by LiuGong

Specifications and designs are subject to change without notice. Machines shown may include optional equipment. LiuGong standard and optional equipment may vary from region to region. Please consult your LiuGong dealer for information specific to your area. Engine power kW is converted to horsepower (1 kW=1.3596 ps and 1 kW=1.3410 hp) in this file.