



| | |
|---------------------------|-------------------------------------|
| Engine Power | 179 kW (240 hp /243 ps) @ 2,000 rpm |
| Blade Capacity | 8.4 m ³ |
| Operating Weight | 26,400 kg |
| Lift above Ground | 1,300 mm |
| Depth below Ground | 550 mm |

B230S BULLDOZER

TOUGH WORLD. TOUGH EQUIPMENT.

B230S SPECIFICATIONS >>>

ENGINE

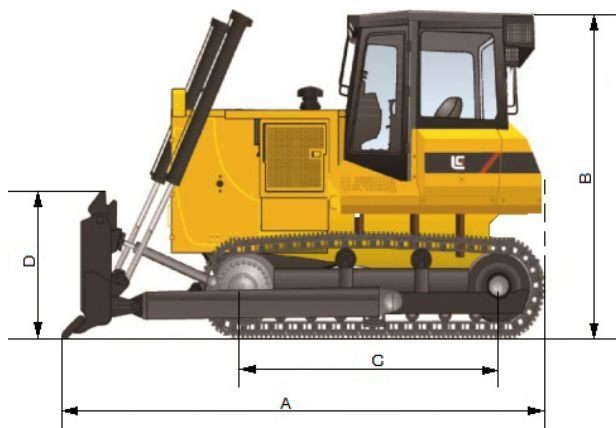
| | |
|-------------------------|-------------------------------------|
| Model | NT855C280 |
| Type | Turbocharged, 4-stroke |
| Emission Regulation | Tier 1 / China I |
| Displacement | 14 L |
| Max. Engine Speed | 2,200 rpm |
| Engine Power | 179 kW (240 hp /243 ps) @ 2,000 rpm |
| Peak Torque | 1,050 N·m @ 1,400 rpm |
| Lowest Fuel Consumption | ≤217 g/kW·h |
| Start Motor | 24 V |
| Drawbar Pull | 225 kN |

UNDERCARRIAGE

| | |
|-------------------------|----------------------------|
| Type | Turbocharged |
| Track Shoes (Each Side) | 8 |
| Top Idlers (Each Side) | 2 |
| Track Type | Triangle track shoe, swamp |
| Shoe Width | 910 mm |
| Track Shoes (Each Side) | 45 |
| Link Pitch | 216 mm |
| Gradeability | 30° |
| Ground Pressure | 39 kpa |

DIMENSIONS

| | |
|--------------------------|----------|
| A Overall Length | 6,060 mm |
| B Height to Top of Cab | 3,420 mm |
| C Track Length on Ground | 3,480 mm |
| D Blade Height | 1,248 mm |
| E Blade Width | 4,365 mm |
| F Width over Track | 3,160 mm |
| G Track Gauge | 2,250 mm |



TRAVEL SPEED

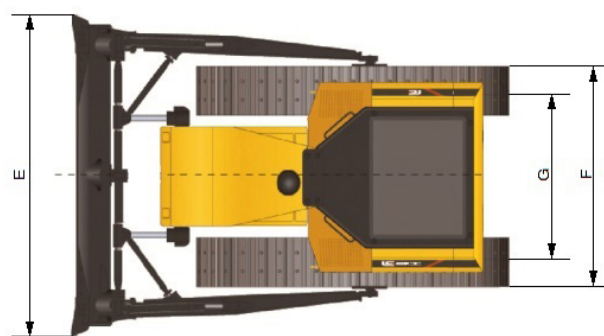
| | | |
|---------|--------|-------------|
| Forward | Gear 1 | 0-3.8 km/h |
| | Gear 2 | 0-6.8 km/h |
| | Gear 3 | 0-10.7 km/h |
| Reverse | Gear 1 | 0-4.9 km/h |
| | Gear 2 | 0-8.6 km/h |
| | Gear 3 | 0-13.3 km/h |

HYDRAULIC SYSTEM

| | |
|-----------|-------------------------|
| Flow | 198 L/min |
| Pressure | 19.5 MPa |
| Pump | Gear pump |
| Cylinders | Dual-acting piston type |

DRIVE SYSTEM

| | |
|------------------|-----------------------------------------------------------------------------------------|
| Torque Converter | Single-stage, single-phase three elements |
| Transmission | Planetary power shift |
| Clutch | Multiple - disc oil powder metallurgy disc compressed by spring, released by hydraulic. |
| Brakes | Oil two direction floating band brake operated by mechanical foot pedal. |



Guangxi Liugong Machinery Co., Ltd.

No. 1 Liutai Road, Liuzhou, Guangxi 545007, PR China
T: +86 772 3886124 E: overseas@liugong.com
www.liugong.com

Specifications and designs are subject to change without notice. Machines shown may include optional equipment. Liugong standard and optional equipment may vary from region to region. Please consult your Liugong dealer for information specific to your area. Engine power kW is converted to horsepower (1 kW=1.3596 ps and 1 kW=1.3410 hp) in this file.

02/2021 Designed by LiuGong
Replace the previous versions of 04/2020