



Engine	Cummins 6LT9.3
Gross Power	162 kW (217 hp / 220 ps) @ 2,200 rpm
Net Power	148 kW (199 hp / 201 ps) @ 2,200 rpm
Operating Weight	16,700 kg
Standard Bucket Size	3.0 m ³
Standard Breakout Force	167 kN
Standard Dump Clearance	2,970 mm

ZL50CN WHEEL LOADER

ZL50CN SPECIFICATIONS >>>

ENGINE

Emission Regulation	Tier 2 / Stage II
Make	Cummins
Model	6LT9.3
Gross Power	162 kW (217 hp / 220 ps) @ 2,200 rpm
Net Power	148 kW (199 hp / 201 ps) @ 2,200 rpm
Peak Torque	890 N · m
Displacement	9.3 L
Number of Cylinders	6
Aspiration	Turbocharged

TRANSMISSION

Transmission Type	Planetary type, power shift
Torque Converter	Double stage, four elements
Maximum Travel Speed, fwd	37 km/h
Maximum Travel Speed, rev	14 km/h
Number of Speeds, fwd	2
Number of Speeds, rev	1

AXLES

Differential Front Type	Conventional
Differential Rear Type	Conventional
Axle Oscillation	±11°

STEERING

Steering Configuration	Articulated
Steering Relief Pressure	12 Mpa

BRAKES

Service Brake Type	Caliper disc brake
Service Brake Actuation	Air over hydraulic
Parking Brake Type	Manual pneumatic control
Parking Brake Actuation	Air

HYDRAULIC SYSTEM

Main Pump Type	Gear
Main Relief Pressure	17 MPa
Raise Time	6.5 s
Dump Time	1.5 s
Float Down Time	3.5 s
Fastest Total Cycle Time	11.5 s

LOADER ARM PERFORMANCE with Standard Bucket 3.0 m³

Tipping Load - Straight (ISO 14397-1:2007)	13,414 kg
Tipping Load - Full Turn (ISO 14397-1:2007)	11,000 kg
Bucket Breakout Force	167 kN
Maximum Dump Angle at Full Height	45°
Dump Clearance at Full Height Discharge	2,970 mm
Dump Reach at Full Height Discharge	1,200 mm
Maximum Hinge Pin Height	4,020 mm
Maximum Digging Depth, Bucket Level	60 mm
Bucket Rollback at Ground Level	42°
Bucket Rollback at Carry	46°
Bucket Rollback at Maximum Height	59°

BUCKET PERFORMANCE

Reference Bucket	3.0 m³
------------------	--------

DIMENSIONS

Length with Bucket Down	8,030 mm
Width Over Tires	2,750 mm
Wheelbase	3,427 mm
Wheel Tread	2,150 mm
Ground Clearance	485 mm
Turn Angle, Either Side	35°
Rear Angle of Departure	30°
Turning Radius, Outside of Tire	6,647 mm
Turning Radius, Center of Tire	6,347 mm
Turning Radius, Bucket Carry	7,598 mm
Width Over Bucket	2,976 mm

TIRES

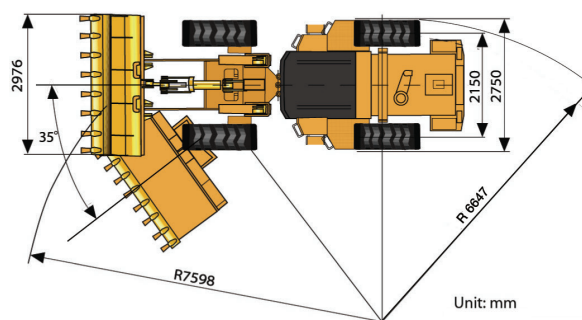
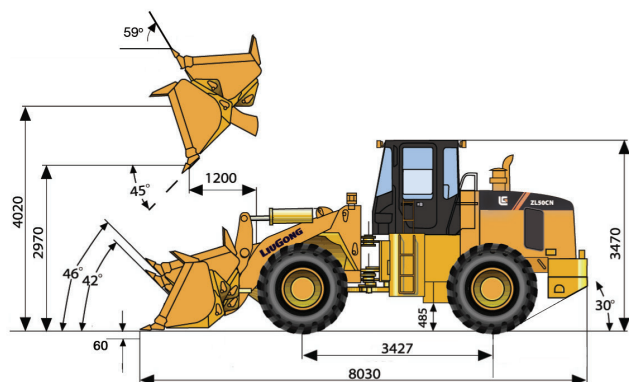
Tire Size	23.5 - 25
-----------	-----------

OPERATING WEIGHTS

Operating Weight	16,700 kg
------------------	-----------

SERVICE CAPACITY

Fuel Tank	300 L
Engine Oil	18 L
Cooling System	50 L
Hydraulic Reservoir	300 L
Transmission and Torque Converter	45 L
Axles, Each	32 L



Guangxi Liugong Machinery Co., Ltd.

No. 1 Liutai Road, Liuzhou, Guangxi 545007, PR China
T: +86 772 3886124 E: overseas@liugong.com
www.liugong.com

Specifications and designs are subject to change without notice. Machines shown may include optional equipment. Liugong standard and optional equipment may vary from region to region. Please consult your Liugong dealer for information specific to your area. Engine power kW is converted to horsepower (1 kW=1.3596 ps and 1 kW=1.3410 hp) in this file.

06/2020 Designed by Liugong
Replace the previous versions of 06/2018