

 **LIUGONG**

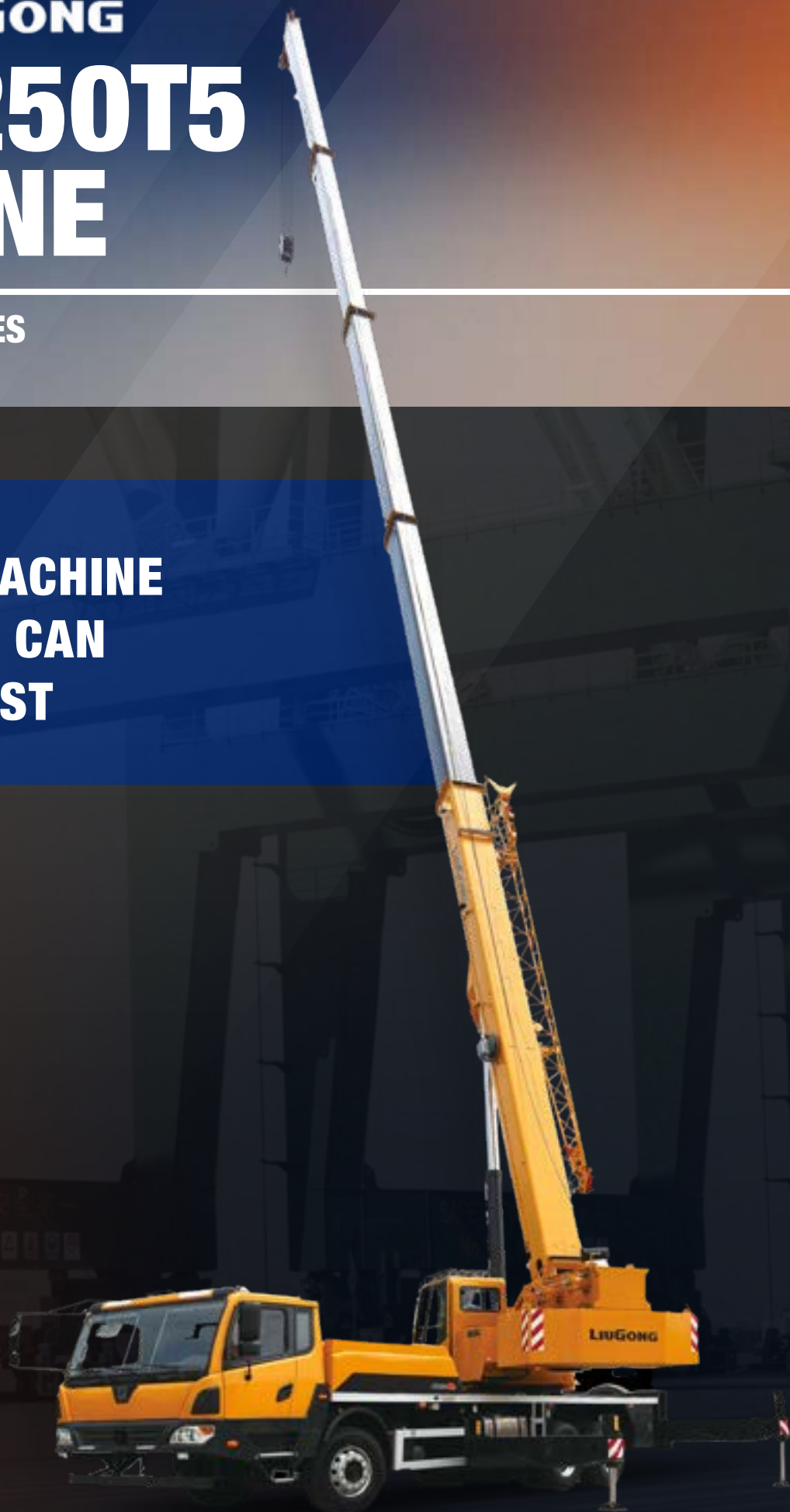
# LTC250T5 CRANE

---

**MOBILE CRANES**



**A MACHINE  
YOU CAN  
TRUST**



**TOUGH WORLD. TOUGH EQUIPMENT.**



# RAISING THE STANDARD.



## A TEAM YOU CAN TRUST

Challenging projects need trusted strength and stability to get the job done. LiuGong has over 70 years' experience making cranes that deliver the most powerful lifting capacity combined with premium safety features and the benchmark for reliability.

We have earned a global reputation for designing the toughest machines and our mobile cranes share this design DNA. They are designed, built and supported by a team you can trust to put your performance first.



## WE PUT YOU FIRST

Our customers tell us that they want mobile cranes that are easy to use, easy to maintain and easy to operate. With optimized safety and stability and with proven reliability and quality to work in the most demanding conditions. You can trust our cranes to deliver all this and more.



## 100% SAFETY COMPLIANT

You can choose LiuGong with confidence. Our mobile cranes are quiet, clean and conform to the latest environmental legislation standards for emissions.

## LET'S PROVE IT



**MORE THAN 70 YEARS  
EXPERIENCE MAKING  
CRANES**



**10% STRONGER  
LIFTING CAPACITY THAN  
COMPETITORS**



**360° 360 DEGREE CAB  
VIEW**



**10,000 HOURS  
BETWEEN  
OVERHAULS**



**2-5 DECIBELS QUIETER  
THAN COMPETITOR  
MODELS**



# TAKE A CLOSER LOOK.



## YOUR SAFETY IS OUR PRIORITY

Your safety is paramount to us, so you can trust our mobile cranes to create the safest working environment.

- 1 Stability is a key safety factor. Our high-strength anti-torsion frame provides the highest levels of stability and load bearing capacity no matter how tough the conditions.
- 2 Our ergonomic, high-visibility cab with tempered window glass and anti-corrosion steel provides a 360 degree view of the jobsite, protecting the operator and co-workers from harm. Our cabs are safe and easy to access, have a spacious working environment and provide the highest levels of comfort.
- 3 Our machines have been designed to work safely day and night, 24/7. Onboard technology such as LMiliang, three-circle projector, height limiter and night vision level provide all-round safety protection from overload, over-winding, over-discharge and anti-tilt. To further enhance safety our cranes are also equipped with reversing camera imagery and winch monitors.



## EASY TO MAINTAIN

Our aim is to make maintenance as fast and easy as possible to reduce unproductive downtime to a minimum.

- 4 With easy access to maintenance and service areas we've made checks and repairs fast and easy.
- 5 Our mobile cranes are powered by world famous Cummins engines renowned for easy maintenance and low running costs. With up to 10,000 hours between overhauls you can enjoy unmatched productivity.



## TOTAL RELIABILITY

Trust is about relying on your mobile crane to deliver optimum performance - every time. We design performance and reliability in from the very start.

- 6 With a proven fuel-efficient, low noise and low maintenance Cummins engine combined with a FAST 9-Shift gearbox, you can rely on our mobile cranes to travel from site to site with speed, efficiency and comfort.
- 7 LiuGong designed hydraulics set the benchmark for reliability. Benefiting from a fixed displacement pump and a load-sensing post compensation valve, we deliver consistently stable operation, smooth compound action and excellent micro-motion performance.
- 8 Our intelligent, electronically controlled chassis system protects the lifting operation and reduces power consumption improving uptime and efficiency.



## UNMATCHED LIFTING PERFORMANCE

When it comes to lifting performance we deliver the perfect combination of stability, power, hydraulic performance and control.

- 9 Our cranes lead the field in both working radius and lifting capacity. LiuGong cranes are 10% stronger than the competition in most boom combinations.
- 10 Anti-saturation main valve improves controllability and stability of compound actions and ensures fast hydraulic response.
- 11 Our winch employs a variable displacement (58-107cc) motor to ensure high operational efficiency. Maximum single line speeds of main and auxiliary winches are up to 130m/min.
- 12 Dead-weight luffing provides more stable luffing operation with low energy loss.



# WE ARE HERE FOR YOU.

LiuGong is a global, forward thinking, customer focused solutions provider. We've come a long way in the last 60 years, but at heart, we are a people business. You can trust our sales teams and product experts to work with you to help you find the perfect equipment, maintenance support and financial solution to perfectly match your operational needs.



TALK TO US TODAY.



## SPECIFICATIONS LTC250T5 MOBILE CRANE

CATEGORY	ITEM			UNIT	PARAMETER
Dimension	Total length			mm	12,945
	Total Width			mm	2,575
	Total height			mm	3,465
	The axle distance			mm	4,635+1,350
	The wheel distance			mm	2,080/1,865/1,865
Weight	The total weight during driving			kg	33,400
	Axle load	The front		kg	7,400
		The rear		kg	13,000/13,000
Power parameters	Engine model				ISDe285 30 (Euro III)
	The rate power of the engine			kW/(r/min)	210/2,500 (Euro III)
	The rate torque of the engine			N·m/(r/min)	970/1,200-1,700 (Euro III)
Driving parameters	The highest driving speed			km/h	80
	The Min turning diameter;			m	21
	The min ground clearance			mm	260
	approach angle			°	11
	departure angle			°	14
	(speed 30km/h) The braking distance			m	≤8.5
Main parameters	The Max Rated lifting capacity			t	25
	The Min Rated range			m	3
	Swing radius			mm	3,315
	MAX lifting torque	Basic boom		kN·m	1,051
		Longest main boom		kN·m	809
	The distance of outrigger	widthwise		m	5.5
		longitudinal		m	6.42
	Lifting hight	Basic boom		m	10.9
		Max main boom		m	43.7
		Max main boom+Jib		m	52.5
	The length of main boom	Basic boom		m	10.9
		Max main boom		m	43
		Max main boom+Jib		m	43+9
Jib offset angle			°	0, 15, 30	
Working speed parameters	Boom luffing time	Fully lifting/descending time of boom		S	40/65
	Boom extension time	Full extension/retraction time of boom		S	98/108
	Max swing speed			r/min	2.4
	Max. lifting speed	Main winch	No load	m/min	120
		Auxiliary winch	No load	m/min	120



LTC250T5 LIFTING CHART

UNIT: KG					
Working radius (m)	Main boom(m)				
	Outrigger fully extended to 6.42m, rear/side operation. With fifth outrigger supported , the machine can fully swing by 360				
	10.9	16.94	22.96	28.97	34.99
3	25,000				
3.5	25,000	19,400			
4	25,000	19,400	18,700		
4.5	23,800	19,400	18,700		
5	21,400	19,400	18,000		
5.5	19,500	19,000	17,250	11,600	
6	17,850	17,850	16,500	11,600	
6.5	16,500	16,500	15,800	11,100	8,950
7	15,300	15,300	15,300	10,750	8,900
8		13,400	13,400	9,700	8,100
9		11,800	11,900	8,750	7,400
10		10,200	10,700	8,000	6,800
11		8,950	9,400	7,400	6,300
12		7,700	8,150	6,850	5,800
13		6,700	7,150	6,350	5,450
14			6,300	5,900	5,100
15			5,600	5,500	4,800
16			5,000	5,200	4,550
18			4,000	4,250	4,000
20				3,450	3,500
22				2,850	3,000
24				2,400	2,550
26					2,150
28					1,800
30					
32					
I	0	0	0	0	0
II	0	25%	50%	75%	100%
Rate	8	6	6	4	3

UNIT: KG					
Working radius (m)	Main boom(m)				
	Outrigger fully extended to 6.42m, rear/side operation. With fifth outrigger supported , the machine can fully swing by 360				
		18.94	24.96	30.98	37
3	25,000				
3.5	25,000	17,300			
4	24,500	17,300			
4.5	23,500	17,300	17,300		
5	21,450	17,300	17,300		
5.5	19,500	17,300	17,300		
6	17,850	17,300	16,500	11,400	
6.5	16,500	16,500	15,600	10,800	
7	15,000	15,300	14,900	10,500	
8	12,700	13,400	13,400	10,050	8,300
9	10,800	11,600	11,900	9,200	7,750
10		10,000	10,600	8,400	7,100
11		8,700	9,150	7,750	6,600
12		7,450	7,900	7,200	6,100
13		6,450	6,900	6,700	5,750
14		5,650	6,100	6,250	5,400
15			5,400	5,650	5,050
16			4,800	5,050	4,750
18			3,800	4,050	4,250
20				3,300	3,450
22				2,700	2,850
24				2,200	2,400
26					2,000
28					1,650
30					
32					
I	25%	25%	25%	25%	25%
II	0	25%	50%	75%	100%
Rate	8	5	5	4	3

LTC250T5 LIFTING CHART

UNIT: KG					
Working radius (m)	Main boom(m)				
	Outrigger fully extended to 6.42m, rear/side operation. With fifth outrigger supported , the machine can fully swing by 360				
	14.93	20.95	26.97	32.99	39.01
3	25,000				
3.5	25,000	18,800			
4	24,000	18,800			
4.5	22,600	18,800			
5	21,450	18,800	15,600		
5.5	19,500	17,900	15,600		
6	17,850	17,100	15,600		
6.5	16,500	16,000	15,000	10,200	
7	15,000	15,300	14,300	10,200	
8	12,600	13,200	13,100	10,200	8,250
9	10,600	11,300	11,800	9,500	7,850
10	9,100	9,900	10,300	8,750	7,350
11	7,600	8,450	8,950	8,100	6,850
12		7,250	7,750	7,500	6,350
13		6,250	6,750	7,000	5,950
14		5,450	5,900	6,200	5,600
15		4,750	5,200	5,500	5,250
16		4,150	4,600	4,900	4,950
18			3,600	3,900	4,100
20			2,850	3,150	3,350
22			2,250	2,550	2,750
24				2,050	2,250
26				1,650	1,850
28					1,500
30					1,200
32					950
I	50%	50%	50%	50%	50%
II	0	25%	50%	75%	100%
Rate	8	6	5	3	3

UNIT: KG					
Working radius (m)	Main boom(m)				
	Outrigger fully extended to 6.42m, rear/side operation. With fifth outrigger supported , the machine can fully swing by 360				
	16.94	22.96	28.97	34.99	41.01
3					
3.5					
4	21,500	17,300			
4.5	21,000	17,300			
5	20,000	17,300			
5.5	19,000	17,300	13,800		
6	17,850	16,300	13,800		
6.5	16,300	15,500	13,800		
7	14,800	14,800	13,800	10,300	
8	12,400	13,000	12,450	10,300	
9	10,600	11,300	11,150	9,750	7,750
10	9,000	9,800	10,150	9,000	7,400
11	7,450	8,250	8,750	8,400	6,950
12	6,250	7,050	7,550	7,800	6,500
13	5,300	6,050	6,550	6,850	6,100
14		5,250	5,750	6,000	5,750
15		4,550	5,050	5,300	5,400
16		3,900	4,400	4,700	4,900
18			3,450	3,700	3,900
20			2,700	2,950	3,150
22			2,100	2,350	2,550
24				1,900	2,100
26				1,500	1,700
28				1,150	1,350
30					1,050
32					800
I	75%	75%	75%	75%	75%
II	0	25%	50%	75%	100%
Rate	8	5	5	3	3



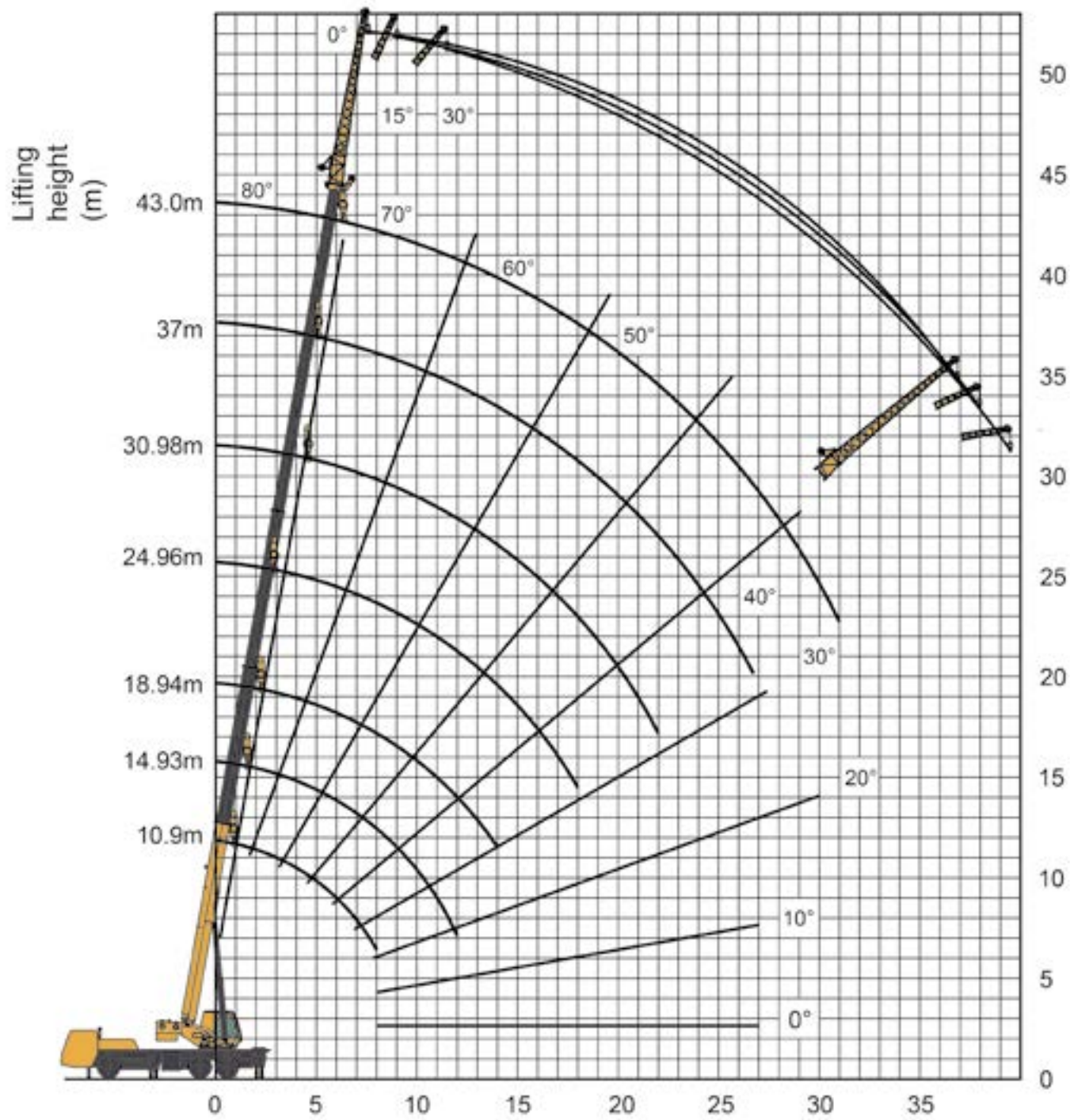
# LTC250T5 LIFTING CHART

UNIT: KG					
Working radius (m)	Main boom(m)				
	Outrigger fully extended to 6.42m, rear/side operation. With fifth outrigger supported , the machine can fully swing by 360				
	18.94	24.96	30.98	37	43
3					
3.5					
4	14,500				
4.5	14,500	17,800			
5	14,500	17,200			
5.5	14,500	16,600			
6	14,500	15,600	12,500		
6.5	14,500	14,800	12,500		
7	14,500	14,100	12,500	10,000	
8	12,300	12,850	11,950	10,000	
9	10,400	11,200	10,800	9,900	7,450
10	8,900	9,600	9,800	9,050	7,300
11	7,400	8,200	8,650	8,400	6,950
12	6,200	6,950	7,450	7,750	6,600
13	5,250	6,000	6,450	6,750	6,250
14	4,400	5,200	5,650	5,950	5,900
15	3,700	4,450	4,950	5,250	5,450
16	3,100	3,850	4,300	4,600	4,850
18		2,900	3,350	3,650	3,850
20		2,150	2,600	2,900	3,100
22		1,550	2,000	2,300	2,500
24			1,550	1,800	2,000
26			1,150	1,400	1,600
28			800	1,100	1,300
30				800	1,000
32					750
I	100%	100%	100%	100%	100%
II	0	25%	50%	75%	100%
Rate	6	6	4	3	3

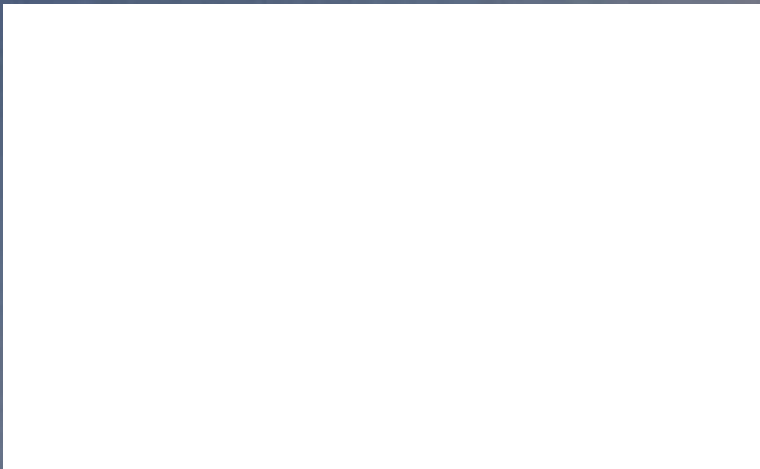
UNIT: KG			
Outrigger fully extended; without the fifth outrigger , rear/side operation; With fifth outrigger supported, the machine can fully swing by 360°			
Main boom43+ JIB9 (m)			
installation angle	0°	15°	30°
main boom angle of gradient	Lifting Capacity		
80°	3,000	2,600	1,900
76°	2,900	2,400	1,750
76°	2,800	2,200	1,700
70°	2,500	2,100	1,600
65°	2,150	1,800	1,500
60°	1,600	1,450	1,300
55°	1,100	1,050	950
50°	800	750	700
40°	280	260	250

UNIT: KG			
Outrigger half extended , without fifth outrigger, rear/side operation; With fifth outrigger supported, the machine can fully swing by 360°			
Main boom43+ JIB9 (m)			
installation angle	0°	15°	30°
main boom angle of gradient	Lifting Capacity		
80°	3,000	2,600	1,900
76°	2,900	2,400	1,750
73°	2,800	2,200	1,700
70°	2,150	1,800	1,600
65°	1,250	1,200	1,200
60°	790	730	680
55°	350	320	300
50°	800	750	700
40°	280	260	250

# LTC250T5 LIFTING HEIGHT CURVE







**Guangxi LiuGong Machinery Co., Ltd.**

No. 1 Liutai Road, Liuzhou, Guangxi 545007, PR China  
T: +86 772 388 6124 E: overseas@liugong.com  
www.liugong.com

Like and follow us:



LG-PB-WW-LTC250T5-062022-ENG

The LiuGong series of logos herein, including but not limited to word marks, device marks, letter of alphabet marks and combination marks, as the registered trademarks of Guangxi LiuGong Group Co., Ltd. are used by Guangxi LiuGong Machinery Co., Ltd. with legal permission, and shall not be used without permission. Specifications and designs are subject to change without notice. Illustrations and pictures may include optional equipment and may not include all standard equipment. Equipment and options varies by regional availability.